



**MARK**

# Shoe Accessories

Special fasteners  
Shoe hooks  
Eyelets  
Punched rings  
D-rings  
Self punching rivets  
Washers  
Double rivet hooks  
Double rivets  
Machines and tools

Art of Tech in 3<sup>rd</sup> Dimension

# MARK

## Shoe Accessories

### MARK – Metal towards future

Its emphasis on quality and innovation has made MARK a well-appreciated partner of the shoe as well as the automotive industry. Since 1920 MARK has been exporting metal accessories, machines and tools into the whole world.

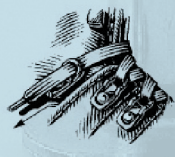
Due to its revolutionary product designs, MARK has become Europe's leading producer of fastening systems for sports shoes. Many patents and an innovation award from the Federal State of Upper Austria confirm the high potential of innovation of this well-established Austrian company.

Eyelets, rivets, shoe hooks or fastening systems – MARK stands for 80 years of know-how and high class products made in Austria. MARK has been certified according to ISO 9001 since 1995.

ISO 9001  
TS 16949

#### How it works:

Put the lace through the quick lock ring from below. To fix the lace, cross it and pull until you hear a click. Take the lace right behind the ring and pull with a short yank heelwards to release the lace.



### Easy Running-Quick Lock System

The patent pending products of MARK's Easy Running Quick Lock system make shoe lacing a surprisingly easy thing to do:

- Fast lancing (you only need one pull to tighten the lace)
- Open and fix the lace with a jerky pull of the lace
- The foot is placed most comfortably in the shoe
- Top fashion design

Easy products lead the lace without friction over fixed or movable rotating parts.

The Quick-Lock system fastens the lace, thereby avoiding the usual and annoying lacing up after each d-ring pair.



**Article**  
**Recommended lace**  
**Patent pending**

**Easy Run Loop**  
Flat lace  
W0 98/03094  
DE-GM 297 08 834

**Art.-No. Fe** 1638  
**Art.-No. Brass** -  
**Art.-No. CuFe** -



**Easy Roller**  
Round lace  
W0 97/14328  
DE-GM 296 22 865  
US 6 081 977 A

-  
-  
1647



**Easy Lock**  
Round lace  
DE 299 07 831 U1

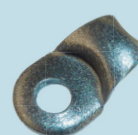
1661  
-  
-



**Article**  
**Recommended lace**  
**Patent pending**

**Easy Roller 2**  
Round lace  
W0 98/03094  
DE-GM 297 08 834  
US 6 081 977 A

**Art.-No. Fe** 1671  
**Art.-No. Brass** -  
**Art.-No. CuFe** 1675



**Easy Pull**  
Round lace

1681  
-  
-



**Easy Roller small**  
Round lace  
W0 98/03094  
DE-GM 297 08 834  
US 6 081 977 A

-  
-  
1684



**Article**  
**Recommended lace**  
**Patent pending**

**Clinch ring large**  
Round lace  
W0 98/03094  
DE-GM 297 08 834

**Art.-No. Fe** 4930  
**Art.-No. Brass** -  
**Art.-No. CuFe** -



**Clinch ring**  
Flat lace  
W0 96/24269  
DE-GM 296 22 774

4920  
-  
-



**Easy Circle Loop**  
Round lace  
DM 044 705

1655  
-  
-

Plastic plate: PA 6 (polyamid,  
d-ring: steel (Fe).

# MARK

## Shoe Accessories



**Article** Easy Glider  
**Recommended lace** Round lace  
**Patent pending** W0 97/14328  
 DE-GM 296 22 865

**Art.-No. Fe** 1656  
**Art.-No. Brass** -  
**Art.-No. CuFe** -

*Shoe lace glides smoothly over a rotation axle.*



**Article** Lace blocker  
**Recommended lace** Round lace  
 EP 0 398303B1  
 DE-GM 89 16 201

**Art.-No. Fe** -  
**Art.-No. Brass** -  
**Art.-No. CuFe** 4900

*Material: PA 12 and stainless steel, excellent fixing features*



**Article** Easy Move Hook  
**Recommended lace** Flat and round laces  
 DM 047 711

**Art.-No. Fe** 1663  
**Art.-No. Brass** -  
**Art.-No. CuFe** -

*Can be used like a hook (open side towards the middle) or like a d-ring (closed side towards the middle). There is no risk that the hook is bent up.*

### SHOE HOOKS



<b>Shank length (mm)</b>	-	-	3,70	7,0
<b>Art.-No. Fe</b>	1639	1507	1515	1634
<b>Art.-No. CuFe</b>	-	1604	-	-

### SHOE HOOKS



<b>Shank length (mm)</b>	5,0	4,5	6,0	2,3
<b>Art.-No. Fe</b>	1530	1547	1549	1586
<b>Art.-No. CuFe</b>	-	-	1628 (R)	-

alternative 1528 short shank (3,3 mm)

### SHOE HOOKS



<b>Shank length (mm)</b>	5,0	6,0	5,0
<b>Art.-No. Fe</b>	1568	1577	1578
<b>Art.-No. CuFe</b>	-	-	-

alternative 1569 short shank (3,5 mm)

### COUNTER RIVETS



<b>Art.-No. Fe</b>	2487	2908	2912	2915	2923
<b>Art.-No. CuFe</b>	2488	2927	-	-	-
<b>Shank length (mm)</b>	7,5	6,5	6,0	7,0	6,0
<b>ø of base plate (mm)</b>	9,3	10,5	10,5	10,5	9,0

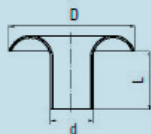
*Short shank hooks are fastened with MARK counter rivets. Long shank hooks are fixed with a roll or star clinch; counter rivets can be used to increase the quality of the fastening.*

# MARK

## Shoe Accessories

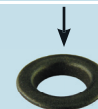
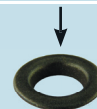
With the help of MARK tools (dies) our eyelets can be either roll or star clinched. Counter eyelets are used for soft materials in order to reduce the tear-off risk.

### STANDARD EYELETS



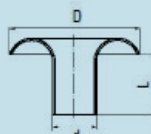
d/L/D	6,7/5,5/12	3,5/4,4/6,0	4,0/4,0/7,3	4,0/5,0/7,3	4,0/4,5/8,0	5,0/4,5/10,0	5,0/5,5/10,0
Art.-No. Fe	0005	0012	0013	0014	0009	0007	0008
Art.-No. Brass	0042	-	-	-	-	-	0046

### COUNTER EYELETS



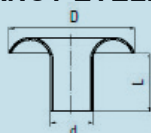
Art.-No. Fe	0043					0253	0253
Art.-No. Brass	0071						

### OVAL EYELETS



d/L/D	21,5x5/5,5/28,5x12 + counter ring		25,5x6/5,3/33x13,5 + counter ring	
Art.-No. Fe	0020	0021	0022	0023
Art.-No. Brass	0061	0062	-	-

### FANCY EYELETS



d/L/D	3,6/3,0/6,5	5,1/4,5/10,0	5,1/5,5/11,0
Art.-No. Fe	0231	0400	0011
Art.-No. Brass	0232		

### RECTANGULAR WIRE PARTS



d/L/D	4018	4019	4020	4021	4022	4036	4063
passage (mm)	16	18	20	22	24	26	26
wire diameter (mm)	2,5	2,5	2,5	2,5	2,5	3	2,5

#### Your MARK product advantage:

Optimum gliding features due to round shape wire, high resistance (up to 80 kg depending on direction of pull).

### SEMICIRCLE RINGS



d/L/D	4027	4000	4001	4028
passage (mm)	10	10	11	12
wire diameter (mm)	2,2	1,8	2,2	2,2

### PUNCHED RINGS



d/L/D	4216	4004
passage (mm)	-	-
wire diameter (mm)	9	10,7

#### Your MARK product advantage:

No tear-off risk and a reduced wear of laces through perfectly rounded edges.

# MARK

## Shoe Accessories

### ONE-PIECE-D-RING with long shank



Art.-No. Fe	1702
Art.-No. CuFe	1738

### ONE-PIECE-D-RING with short shank



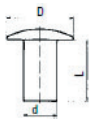
Art.-No. Fe	1701
Art.-No. CuFe	-

### D-RINGS with hole



Art.-No. Fe	1706	1708	1709	1712	1720
Art.-No. CuFe	-	1727	-	-	-

### SELF PUNCHING RIVETS



d/L/D	4/8/7	4/6/7	4/7/7	4/8/8	4/10/7	4/12/7
Art.-No. Fe	2109	2104	2107	2110	2241	2117
Art.-No. CuFe	2211	-	2122	-	-	2252
Rivet Steel Cap CuFe	2253		2257			

### COUNTER WASHERS

D/D <sub>s</sub>	4,5/8,5/0,7	4,5/10,5/0,7	5,6/12/0,7	6,8/16/0,8
Art.-No. Fe	3635	3608	3661	3671
Art.-No. CuFe	3733	-	-	-

#### Your MARK product advantage:

MARK tools enable rivets to be fixed with either a roll or a star clinch. Counter washers increase the quality of the fastening, as well as the self punching rivets they can be fixed with our automatic 1301 machines.

# MARK

## Shoe Accessories

### LACE BLOCKERS



<b>Art.-No. Fe</b>	1563	1587	1644
<b>Art.-No. CuFe</b>	-	-	-

### DOUBLE RIVET HOOKS



<b>Art.-No. Fe</b>	1561	1579
<b>Art.-No. CuFe</b>	-	-

### DOUBLE RIVETS- Lower parts



<b>d x D x L</b>	4x7x8,5	4x9x10,0	4x9x8
<b>Art.-No. Fe</b>	2410	2428	2487
<b>Art.-No. CuFe</b>	-	-	2488



Click rivet

**Your MARK product advantage:**  
In addition to the standard version, capped or uncapped lower rivets are also available in a notched version.

### DOUBLE RIVETS- Upper parts



<b>d x D</b>	K 4 x 7	K 4 x 7 (L=4)	K 4 x 8	K 4 x 10
<b>Art.-No. Fe</b>	2302	2137	2322	2308
<b>Art.-No. CuFe</b>	-	2246	-	-

MARK offers you all tools and machines which you might require for the processing of MARK accessories.

## MACHINES

The MARK 1301 machine featuring fully automatic feed and electronic monitoring permits the setting of fasteners, self-punching rivets and washers in one single operation. This system provides the strongest possible fixing with no tear-off-risk.

Up to 60 d-rings, loops or fasteners or about 30 double rivet hooks can be fixed per minute. This high output combined with the longevity make MARK machines a profitable investment.

Feeding systems are interchangeable and, therefore, different d-ring models and double hook models can be fixed. MARK offers different types and fitting variations depending on your shoe models.

### Technical Data:

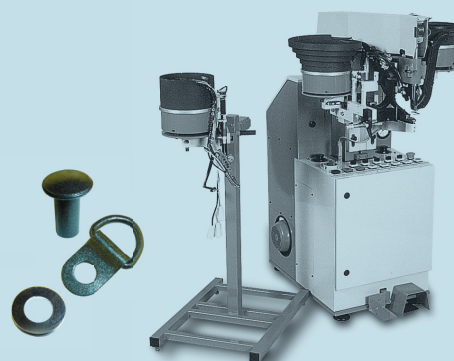
<b>Weight</b>	~ 300 kg
<b>Voltage</b>	220 or 380 volts
<b>Drive</b>	Electric motor with electrical brake-clutch-combination
<b>Air pressure</b>	5 -6 bar
<b>Safety</b>	Equipped according to the latest safety rules

<b>types:</b>	
<b>1301 DH</b>	for double rivet hooks
<b>1301 DH/2</b>	for double rivet hooks with two feeders
<b>1301 DH 3</b>	for double rivet hooks 1644 and loop 1639
<b>1301 DH 4</b>	for loop 1639 or Easy Roller 1647
<b>1301 MKH 1</b>	for d-rings
<b>1301 MKH 2 &amp; 3</b>	for d-rings
<b>1301 MKH 4 &amp; 5</b>	for Easy run loop 1638
<b>1301 MKH/DH</b>	for d-rings and double rivet hooks
<b>1301 ST</b>	for loop 1507
<b>1301 DH 6</b>	for Easy Move 1663
<b>1301 MKE</b>	seniautomatic
<b>SP 152</b>	for 1702

## TOOLS

MARK supplies the suitable tools for all MARK-products (eyelets, rivets, hooks,...).

- Simple hand presses with 160 mm clearance.
- Tools for your machine type or for hand presses according to a drawing or sample
- Simple eyeleting and riveting machines (pneumatic, electrical or operated by pedal drive)
- Automatic machine to fix eyelets and counter-eyelets.



# MARK

## Shoe Accessories

### The matching colour

MARK combines current fashion and a wide range of coatings and colours with innovative function and excellent product quality.

You can choose from the following colours:

- Galvanic standard coatings
- Nickel-free coatings: gunmetal (HRT), antique copper, antique brass, RAL colours, zinc plated, zinc black, oldsilver
- Nickel plated, brass plated (gold)
- Special colours upon request

You will find more information on our products and our company on our web-site in the internet.

[www.mark.at](http://www.mark.at)



<b>Colour No.</b>	42	70	71
<b>Label</b>	HRT(gunmetal)	nickel-nickelfree	nickel plated



<b>Colour No.</b>	74	78	81
<b>Label</b>	zinc plated	antique copper	antique brass



<b>Colour No.</b>	86	88	coloured
<b>Label</b>	zinc black	brass plated	RAL

**Attention:** Possible deviations in colour due to printing

### The suitable material

#### FE (steel)

**Advantage:** high tensile strength

Corrosion resistance is becoming increasingly important for metal components of shoes. Through waterproof materials like Gore-Tex, Sympatex or Pura-Tex shoes can be worn under extreme conditions. High humidity, salt water or tannic acids increase the risk of rust on steel hardware.

Thicker coatings as well as MARK's latest development HRT (high resistance treatment) increase the rust resistance. Nevertheless, corrosion may occur either when the surface is hurt by the clinching or in problem areas which the coating does not reach perfectly.



#### Brass

**Advantage:** 100 % rustproof

Due to its relatively low degree of hardness, brass may be subject to stress corrosion (cracking of the material) under difficult conditions (deforming, tanning acids,...) Therefore, MARK uses brass solely for eyelets.

#### CuFe

**Advantages:**

- CuFe is a special copper alloy which is much harder than brass and excludes the risk of stress corrosion.
- 100 % rustproof
- Antistatic

Because of its excellent quality, CuFe is mainly used for rivets, hooks and d-rings.





# MARK

MARK Metallwarenfabrik GmbH  
Gleinkerau 23  
A-4582 Spital am Pyhrn  
Austria/Europe  
Phone: +43-7563-8002-0  
Fax: +43-7563-8041-110  
e-mail: [info@mark.at](mailto:info@mark.at)  
[www.mark.at](http://www.mark.at)

